



Virginia Healthcare Workforce Briefs

Indicators from the Bureau of Labor Statistics'
Current Employment Statistics Survey
Series 1: State & National Employment

Series 1, Issue 94

January 2020

Inside this Brief:

Virginia HC&SA Employment	2
Virginia Employment	2
National Employment	3
State Employment Growth	3
About the Data	4

Data in the report are seasonally adjusted. Self-employed persons, including health professionals in private practice, are not included.

Highlights

- ◆ According to preliminary estimates, Virginia's Health Care & Social Assistance (HC&SA) sector enjoyed its largest employment gain in seven months thanks to the creation of 1,900 new jobs in December. This gain represents a one-month annualized employment growth rate of 5.1%. In 2019, Virginia's HC&SA sector created 16,500 jobs across the state.
- ◆ Virginia's HC&SA sector was responsible for more than one-third of all growth in the state's total nonfarm payroll, which increased by 5,200 in December. Virginia's total nonfarm payroll increased by 32,100 in Q4 2019, which represents a three-month annualized growth rate of 3.2%.
- ◆ The national HC&SA sector experienced a slowdown in its employment growth rate in December after creating 33,900 new jobs during the month. This translates into a one-month annualized growth rate of 2.0%. With this gain, national HC&SA employment increased by 556,600 in 2019.
- ◆ There was a similar slowdown in the growth rate of the nation's total nonfarm payroll, which increased by 145,000 in December. This gain translates into a 1.1% annualized growth rate. In addition, this represents the weakest monthly gain in the nation's total nonfarm payroll since May.

Data in Brief

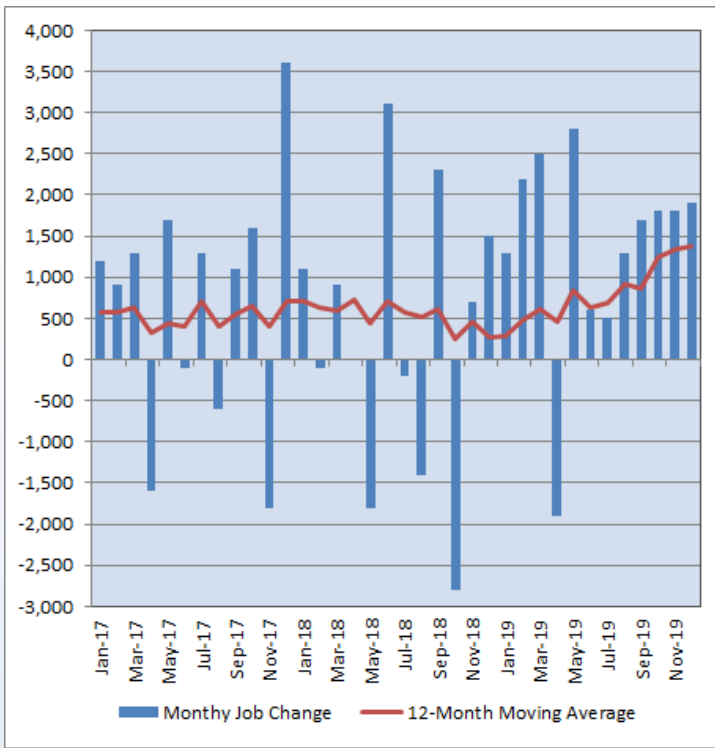
Seasonally Adjusted*	Employment, in Thousands				Growth Rate, Annualized		
	Dec. 2018	Sept. 2019	Nov. 2019	Dec. 2019	12 Month	3 Month	1 Month
Nonfarm, Total							
Virginia	4,008.6	4,021.7	4,048.6	4,053.8	1.1%	3.2%	1.6%
National	150,275.0	151,830.0	152,238.0	152,383.0	1.4%	1.5%	1.1%
Health Care & Social Assistance							
Virginia	445.9	456.9	460.5	462.4	3.7%	4.9%	5.1%
National	20,166.1	20,587.2	20,688.8	20,722.7	2.8%	2.7%	2.0%
All Other Nonfarm							
Virginia	3,562.7	3,564.8	3,588.1	3,591.4	0.8%	3.0%	1.1%
National	130,108.9	131,242.8	131,549.2	131,660.3	1.2%	1.3%	1.0%

Preliminary estimates are italicized

*Seasonally adjusted data are adjusted by the Bureau of Labor Statistics to account for weather, holidays and other seasonal changes. Economists use seasonally adjusted data to reveal underlying trends over time. This series uses seasonally adjusted data exclusively. When comparing data in this series to other HWDC series, or publications from other sources, it is important to note whether the data reported have been seasonally adjusted.

Virginia HC&SA Employment

Figure 1: Monthly Change in Employment in Virginia’s Health Care & Social Assistance Sector, Seasonally Adjusted.



According to preliminary data released on Friday, January 24, 2020, by the U.S. Department of Labor, Bureau of Labor Statistics, Virginia’s Health Care & Social Assistance (HC&SA) sector enjoyed its eighth consecutive month of positive employment growth after creating 1,900 new jobs in December. This gain translates into a one-month annualized employment growth rate of 5.1%. December’s employment gain marks a strong end to a year in which Virginia’s HC&SA sector created 16,500 new jobs across the state. This represents the largest full-year employment gain in Virginia’s HC&SA sector since 2015.

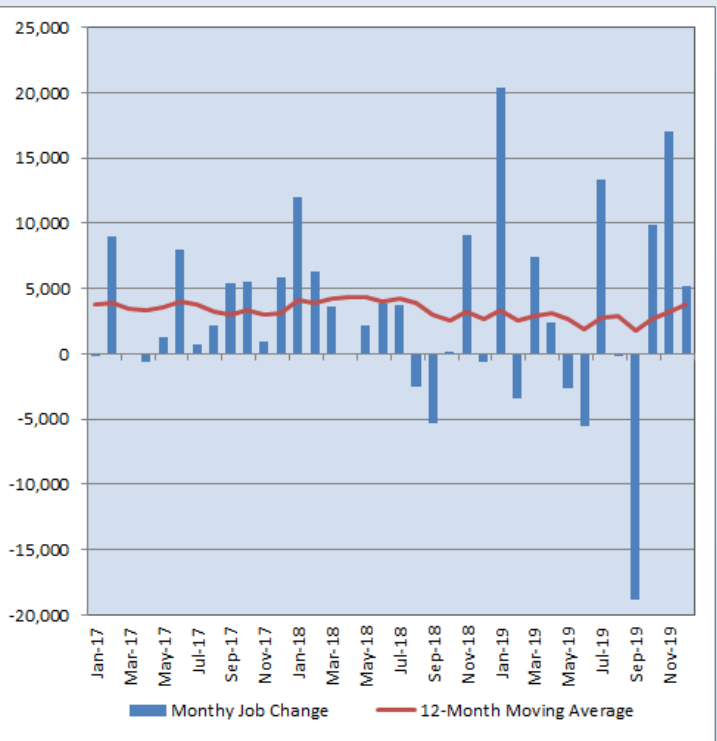
The strong long-term employment growth in Virginia’s HC&SA sector can also be observed in the significant increase of its 12-month moving average over the course of 2019. In January, the 12-month moving average of the employment change in Virginia’s HC&SA sector was below 300. However, this moving average has more than quadrupled in 2019. Virginia’s HC&SA sector has now produced an average of 1,375 jobs per month over the past year. This average monthly job gain translates into a 12-month employment growth rate of 3.7%.

Virginia Employment

Virginia’s total nonfarm payroll increased by 5,200 in December, which translates into a 1.6% annualized growth rate. In addition, this represents the first time in more than one year in which Virginia’s total nonfarm payroll has enjoyed three consecutive months of positive growth. In Q4 2019, the state’s total nonfarm payroll increased by 32,100. This three-month job gain translates into a 3.2% annualized employment growth rate. At the same time, it also represents the largest quarterly gain in the state’s total nonfarm payroll since Q3 2015. This growth in Q4 2019 led to a strong full-year gain of 45,200 in the state’s total nonfarm payroll.

Virginia’s HC&SA sector remains a significant contributor to the growth in the state’s total nonfarm payroll. In December, Virginia’s HC&SA sector was responsible for more than one-third of all employment growth in the state during the month. This is in line with the long-term average given that 37% of all job growth in the state’s total nonfarm payroll over the past year has come from the HC&SA sector. At the same point last year, the share of the 12-month employment gain in Virginia’s total nonfarm payroll that was attributable to the state’s HC&SA sector was just 10%.

Figure 2: Monthly Change in Employment in Virginia’s Total Nonfarm Payroll, Seasonally Adjusted.

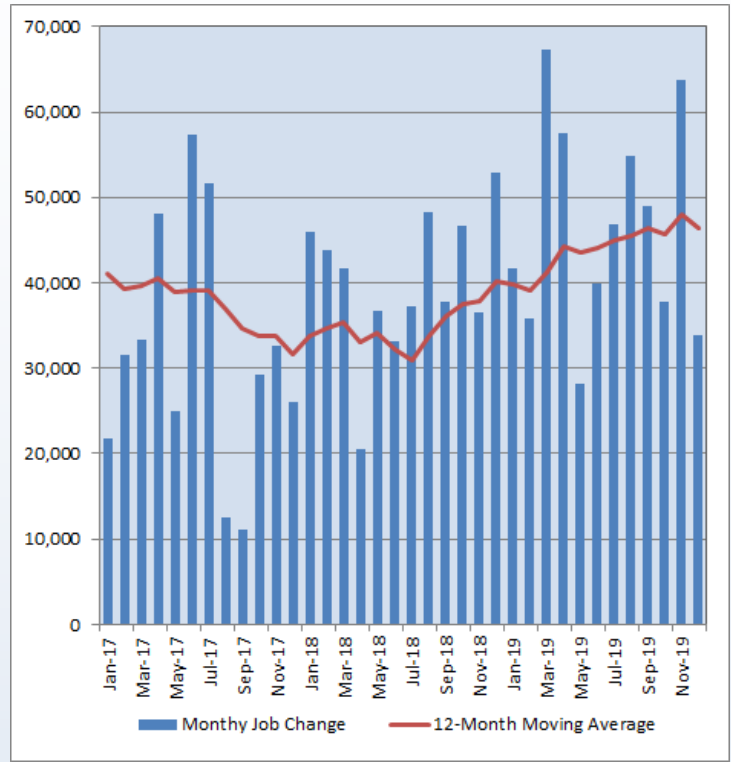


National Employment

In November, the national HC&SA sector experienced its largest monthly employment gain since March with the creation of 63,800 jobs across the country. However, this strong employment growth could not be sustained in December as this sector added 33,900 new jobs during the month, a gain that translates into a 2.0% annualized growth rate. Despite this relatively weak job growth to end the year, national HC&SA employment still increased by 556,600 in 2019. Virginia’s HC&SA sector was responsible for 2.96% of this full-year employment gain in the national HC&SA sector. This represents the largest full-year employment growth share for Virginia’s HC&SA sector since 2015.

As with the national HC&SA sector, the nation’s total nonfarm payroll also experienced a slowdown in its growth rate in December. After growing by 256,000 in November, the nation’s total nonfarm payroll increased by only 145,000 in December. However, whereas the national HC&SA sector created more jobs in 2019 relative to 2018, the opposite was the case for the nation’s total nonfarm payroll, which increased by 2.11 million in 2019. In fact, this total represents its lowest full-year employment gain since 2011.

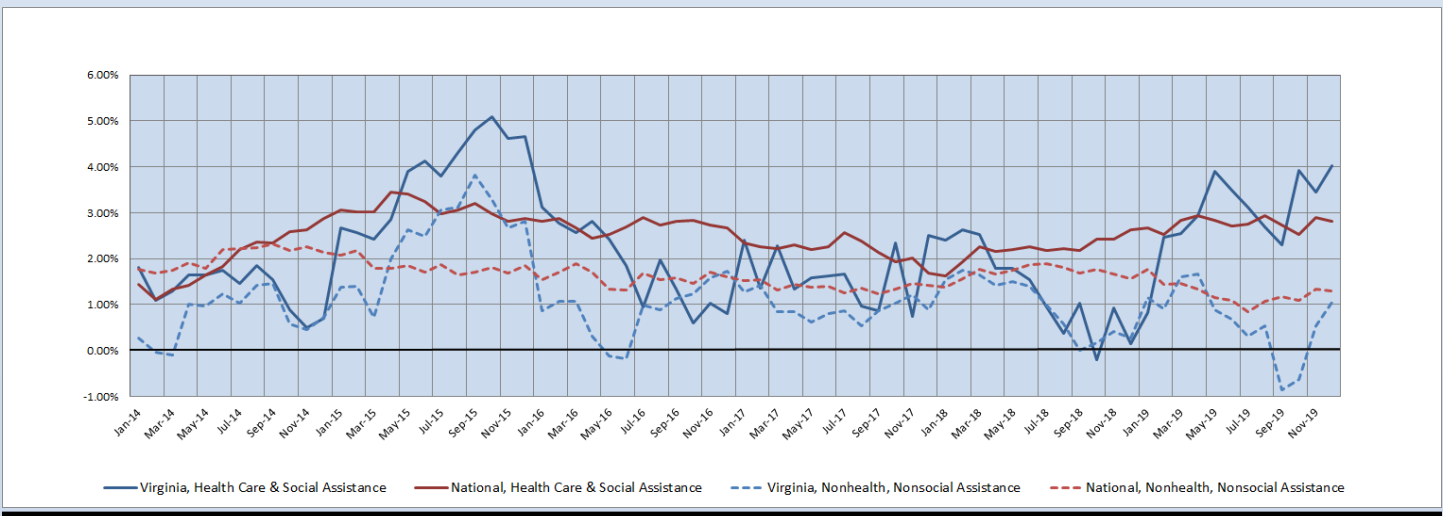
Figure 3: Monthly Change in Employment in National Health Care & Social Assistance Sector, Seasonally Adjusted



State Employment Growth

Thanks to the strong job growth in Virginia’s HC&SA sector in December, its six-month employment growth rate moving average increased from 3.44% to 4.02%, thereby reaching its highest value in four years. As for the national HC&SA sector, its six-month employment growth rate moving average fell slightly in December from 2.89% to 2.82%. This continues a long-term trend in which the six-month moving average of the employment growth rate in the national HC&SA sector has fluctuated within a narrow band between 2.5% and 3.0%. Meanwhile, Virginia’s total nonfarm payroll saw the six-month moving average of its growth rate nearly double from 0.54% to 1.06%. However, this remains below the comparable moving average for the nation’s total nonfarm payroll, which fell slightly in December from 1.34% to 1.30%.

Figure 4: Six-Month Moving Average, Employment Growth, Seasonally Adjusted



**Healthcare Workforce
Data Center**

Perimeter Center
9960 Mayland Drive, Suite 300
Henrico, VA 23233-1463

Phone: (804) 367-2115
Fax: (804) 527-4434
E-mail: hwdc@dhp.virginia.gov
Website: [www.dhp.virginia.gov/PublicResources/
HealthcareWorkforceDataCenter/](http://www.dhp.virginia.gov/PublicResources/HealthcareWorkforceDataCenter/)

HWDC Staff:

Elizabeth Carter, PhD <i>Executive Director</i>	Yetty Shobo, PhD <i>Deputy Director</i>
Laura Jackson, MSHSA <i>Operations Manager</i>	Rajana Siva, MBA <i>Research Analyst</i>
Christopher Coyle <i>Research Assistant</i>	

The Department of Health Professions Healthcare Workforce Data Center works to improve the data collection and measurement of Virginia's healthcare workforce through regular assessment of workforce supply and demand issues among the 80 professions and 350,000 practitioners licensed in Virginia by DHP.

The HWDC collects data on Virginia's licensed health professionals through surveys completed during the online license renewal and application process. Survey results and data may be accessed on our website: www.dhp.virginia.gov/hwdc/.

The HWDC also provides a series of Virginia Healthcare Workforce Briefs based on data collected by the US Department of Labor's Bureau of Labor Statistics and the US Department of Commerce' Bureau of Economic Analysis.

Virginia Healthcare Workforce Briefs:

Series 1: State & National Employment (Monthly)

Series 2: Virginia Regional Employment (Monthly)

Series 3: Income & Compensation (Quarterly)

Follow us on. . .

Tumblr: <http://vahwdc.tumblr.com/>

About the Data

Data in this report are from the US Department of Labor, Bureau of Labor Statistics' Current Employment Statistics program. The CES program surveys about 143,000 businesses and government agencies monthly. Unless otherwise noted, this series uses seasonally-adjusted data that removes seasonal variations related to weather, holidays, weekends, seasons and other predictable variations. This allows us to better examine underlying trends in the labor market. Data from recent months are preliminary and subject to revision in future releases from the CES. Revisions will be reported in future editions of this series. Unless otherwise noted, the CES data presented in this series:

Includes:

- ◆ Data on employed individuals drawing a paycheck (payroll employees).
- ◆ All employees, regardless of role, occupation or hours worked.
- ◆ HC&SA employees in the private sector only.
- ◆ Persons employed by health professionals in private practice.
- ◆ Both government and private sector workers in nonfarm employment data.

Does not include:

- ◆ Self-employed workers or volunteers, including health professionals in private practice.
 - ◆ HC&SA employees in the public sector. (These are counted as government workers in monthly reports).
 - ◆ Information on hours worked or the quality of employment.
 - ◆ Government workers in HC&SA level data. (Government workers, regardless of occupation and role, are classified as public sector employees).
-